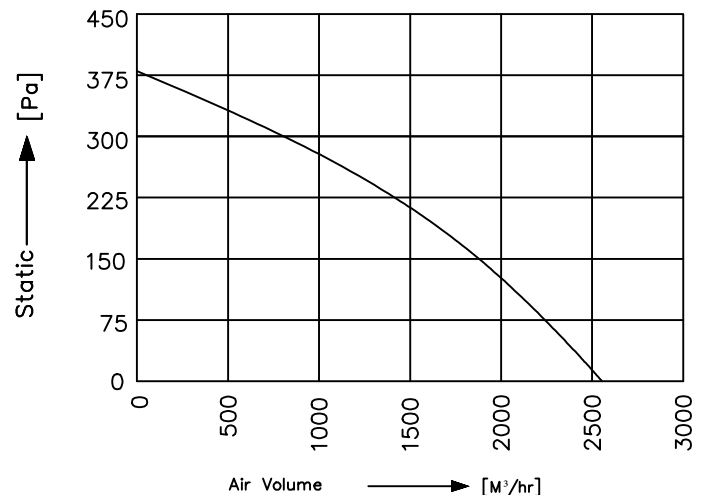


SPECIFICATION (50Hz)

Voltage (V)	230
Watt (W)	300
Amps (A)	1.35
Speed (rpm)	1400
Capacitor (μ F)	10.00
Airflow (m^3/hr)	2550
Noise (dbA)	78
Net Weight (Kg)	29.5

PERFORMANCE CURVE



Conversion: 100pa \approx 0.4" H2O 100 m^3/hr \approx 60cfm

*Material :

- Housing: Steel, Powder coated
- Impeller: Aluminum, Powder coated
- Rotor: Powder coated

*Type of protection: IP-55

*Motor thermally protected at 145° C

*Insulation Class: "F"- Class

*Bearing: Maintenance free Ball Bearing.

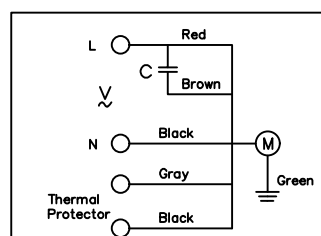
*Permissible ambient temperature: 0 to 60° C

*High Voltage test according to IS: 3588-1987

*Balancing Grade: Fans conform 6.3 Grade as recommended by IS 1940-1-2003

*Direction of rotation: Counter Clockwise, Seen on Impeller

*Wiring Diagram :



MODEL: RI600X350-4E-M5

SCALE: NTS | Page 1 of 1

REV/DATE: 00,19.04.2018

PREPARED BY : J.G.P

CHECKED BY : S.B.D

